

ITAS

Digital
iMAGER™
Advanced Workgroup System

AR- (M) 280U/280N

multitasking

With powerful features and amazing functionality, the Sharp AR-M280U and AR-M280N Digital Imagers redefine productivity.

Multi-tasking. It's essential to optimizing your productivity. And with the accelerated pace of today's business, it's never been more important. That's why Sharp created the AR-M280U and the AR-M280N Digital Imagers. The new AR-M280N is a network-ready multi-tasking system that can copy and network print—right out of the box. With the AR-M280N at your command, you can manage workflow in ways never before possible. If your business requires a high-performance standalone copier, take a look at the new AR-M280U Imager. Designed for busy workgroups, the AR-M280U delivers first-class digital copying with superior image quality and exceptional reliability. Both of these



versatile systems combine best-in-class functionality with incredible flexibility, giving you the power to generate, duplicate, integrate and disseminate information quickly, seamlessly and securely.



SHARP®

Enhanced Productivity and Document Finishing

At 28 copies per minute and continuous copy output of up to 3100 pages, the Sharp AR-M280U/280N Digital Imager can easily handle the requirements of busy offices and workgroups. With its high-performance engine and scan-once, print many technology, the Sharp AR-M280U Imager can streamline office workflow like never before.

Delivering crisp 600 dpi resolution with Sharp's enhanced smoothing technology, the AR-M280U/280N Imager creates superior quality output equivalent to 1200 dpi. The large LCD panel features an intuitive, alpha-numeric touch screen, making it easy to select various options.

For even more productivity, the time-saving Duplex Single Pass Feeder makes two-sided copying fast and efficient. With the Job Build function, you're not limited by the capacity of the document feeder. You can scan up to 10,000 originals into memory*, and then copy as one continuous set—for greater efficiency.

For production-oriented environments, choose one of three optional finishers to simplify document management. With hole punching, multi-position stapling, and saddle stitching/folding, the AR-M280U Imager produces professionally finished documents in a snap. In addition, an optional Two-Tray Sorter/Stapler provides 30-sheet stapling in three positions. And for even more versatility, the Multi-Purpose Paper Tray handles special print media including envelopes, overhead transparencies and heavy cover stocks. Copying has never been so easy—and so productive.



▲ **Duplex Single Pass Document Feeder**
Efficient, two-sided copying speeds your workflow with the 50-sheet Duplex Single Pass Feeder.

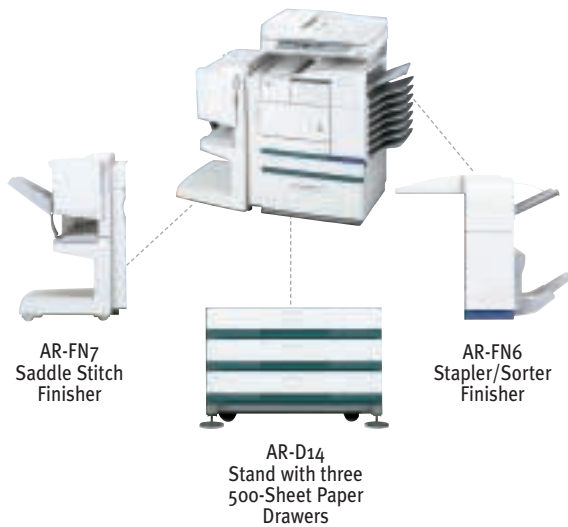


▲ **The easy-to-use touch screen on the control panel of the AR-M280U/280N Digital Imager quickly guides users through various functions.**

* Requires optional 5 GB hard disk drive

AR-M280U/280N Digital Imager

Accessory Options and Upgrades



Upgrade to Connectivity

Because of its innovative modularity, you can easily upgrade the AR-M280U Imager to a fully networkable system—quickly and easily.



AR-M280U
High Performance
Copying



Optional Network Print
Kit (AR-P14) and Network
Interface Card (AR-NC5J)
required for connectivity



AR-M280N
Standard Network
Printing

at a glance

Highlights:

- 1200 dpi equivalent resolution with smoothing technology
- Compatible with PCL5e/6 (standard) and PostScript Level 3 (option)
- Large 3100-sheet paper capacity with options
- Multi-Purpose Paper Tray handles special print media including OH transparencies, heavy stock and envelopes
- Job Build feature for high-volume environments*
- Various image editing functions: Margin-Shift, Overlay, Watermarks, Fit to Page, etc.



Uncompromising Quality, Unparalleled Integration

The AR-M280N Imager combines state-of-the-art digital technology with advanced functionality—for truly best-in-class features.

With 1200-dpi equivalent resolution and 256 shades of grayscale, the AR-M280N Imager delivers ultra crisp text and incredibly detailed images. Whether you print one document or one hundred, this powerful performer delivers exceptional print quality—each and every time.

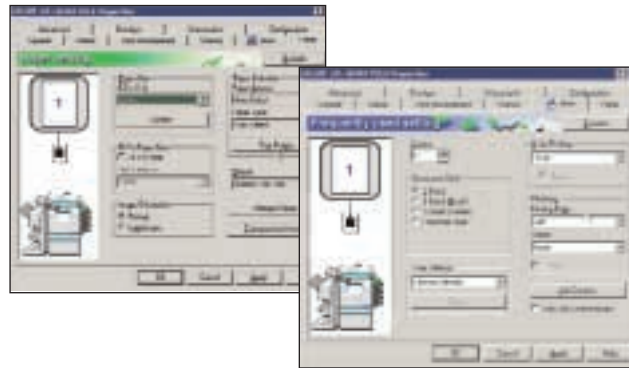
With standard network connectivity, the AR-M280N Imager is much more than just a network printer. With easy-to-use software, your Imager can help you manage, monitor and streamline document workflow—increasing overall productivity.

The **Administrative Utility Suite**, Sharp's integrated software, is intuitive and easy to use. Check printer availability, paper levels, and other options—without ever leaving your desk—with **Printer Status Monitor**. Network Administrators will find versatile tools to speed up the installation and configuration of Imagers on the network with **Printer Administration Utility**. Administrators can also track printing usage for cost accounting and monitor network printer conditions—all with a few keystrokes—right from the desktop.

Add the optional hard drive, and the AR-M280N Imager provides advanced job control features including Confidential Print, Hold Print, and Proof Print—ideal for secure environments.

Best of all, the AR-M280N Digital Imager is compatible with multiple operating systems and protocols, so integrating the Imager into your existing network is never an issue.

PCL5e/PCL6 Print Drivers



Job Control Screen



◀ With the optional 5GB Hard Disk Drive installed, the following Job Control features are enabled—Print Hold, Confidential (PIN) Print, and Proof Print allowing you to manage document output from the control panel.



Printer Queue Panel

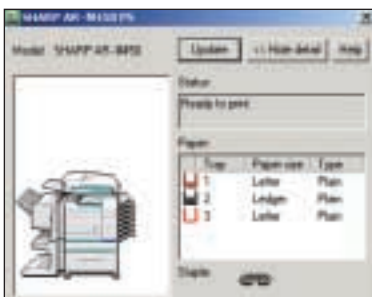
▲ The user-friendly LCD touch screen on the Imager's control panel allows administrators to monitor and control multiple print projects simultaneously.

AR-M280N Digital Imager

Printing Capabilities

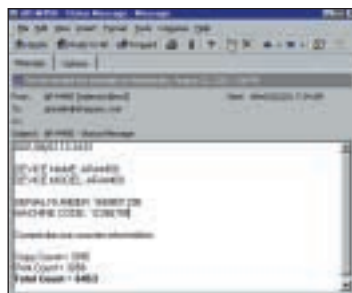
Printer Administration Utility Software

Enables Network Administrators to monitor any SNMP-compliant printer on the network—right from the convenience of their desktop.



Printer Status Monitor

An application which enables users to view network printer conditions through an easy-to-use graphical interface. It even notifies you when your job is complete!



Remote E-Mail Diagnostic (R.E.D.)

A utility that enables key operators, IT Managers and Sharp Authorized Service Providers to automatically receive e-mails regarding specific device notifications. From basic maintenance—such as adding paper or toner or providing reminders of regular service calls, R.E.D. ensures that your Imager will function at peak performance.

at a glance

Highlights:

- Job Retention functions* (bold print/sample print/confidential print) allow you to control printout from the control panel
- 1200 dpi equivalent resolution with smoothing technology
- Compatible with PCL5e/6 (standard) and PostScript Level 3 (option)
- Large 3100-sheet paper capacity with options
- Multi-Purpose Paper Tray handles special print media including OH transparencies, heavy stock and envelopes
- Various image editing functions: Margin Shift, Overlays, Watermarks, Fit to Page, etc.
- Sharp Status Monitor software lets you monitor printer activities

* Requires optional hard disk drive



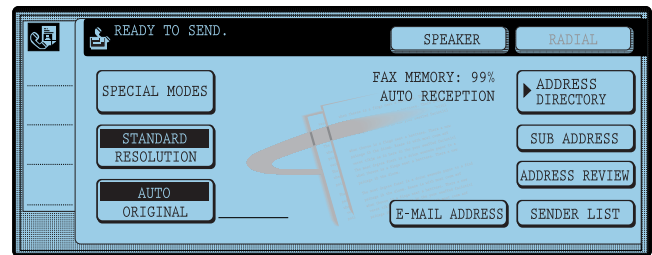
Effortless Document Distribution with ImageSEND



The Sharp AR-M280U/280N Digital Imager is much more than just an output device with copy and print features. With the ability to scan a document, convert it to digital information, and distribute it to multiple users and locations, the AR-M280U/280N Imager becomes a powerful document management system that can streamline your workflow, saving time and money.

With ImageSEND, users can scan a document and send it instantly to a variety of destinations—quickly and easily—with the touch of a few buttons. Sharp's **Administration Utility Suite** makes it easy to program one-touch keys, so your documents can be scanned and routed right from the Imager's control panel. What's more, the built-in QWERTY keyboard makes it easy to send a document to any address—on the fly.

Six main scanning functions are integrated into the ImageSEND button on the AR-M280U/280N Imager's control panel for one-touch simplicity. ImageSEND can drastically reduce overnight mailing costs, streamline your workflow, and save valuable time.



▲ The AR-M280U/280N Digital Imager's control panel is intuitive and easy to use.



▲ Easy-to-use utilities enable you to program one-touch destinations for instant recall.



Send to Desktop allows users to send scanned files directly to their desktop computers and store them in their favorite file formats.



Send to E-mail saves time and allows users to send scanned images directly to any e-mail address.



Send to FTP enables direct scanning to an FTP file server for special applications.



Send to Group allows users to send the same document to multiple e-mail, fax and internet fax destinations—simultaneously.



With the optional fax installed, **Send to Fax** enables users to scan and fax right from the control panel.



Send to i-Fax enables users to send documents worldwide to another T-37 Internet fax machine at virtually no cost—and in considerably less time—as compared to a phone line.

Additionally, Sharp's proprietary software, Sharpdesk™ 3.0 with Index and Search provides users with a comprehensive, easy-to-use document management tool that allows them to edit, integrate and distribute both paper and electronic documents, regardless of the varied applications in which they were created. With Sharpdesk 3.0, users can scan documents directly to workstations, file servers, a specific application, or any e-mail address they choose.



- ▲ **Sharpdesk™ 3.0 (included with AR-NS2)**
Desktop document management software features include Composer, OCR, Image Viewer and more. Use SharpDesk to organize, annotate, edit and combine your files before you print, e-mail, fax or archive them.

- ▲ Sharpdesk's new search and Index capabilities enable you to locate a Sharpdesk file quickly and easily.

at a glance

Highlights:

- ImageSEND allows users to scan and send a document right from the touch-screen LCD Panel
- Send scanned documents to a variety of destinations: Send to E-mail, Send to Desktop, Send to FTP, Send to Fax, Send to i-Fax, and Send to Group.
- Sharpdesk 3.0 software allows for easy and sophisticated document management
- Clear 200, 300 and 600 dpi resolution levels



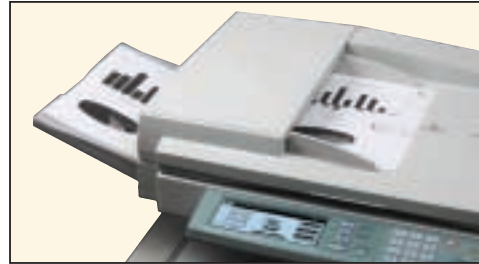
Powerful Fax Functionality

With the optional fax module installed, the Sharp AR-M280U/280N Digital Imager becomes much more than a high performance copier. This lightning-fast fax will enhance your workflow like never before with a 33.6 Kbps modem and transmission times as low as two seconds per page*.

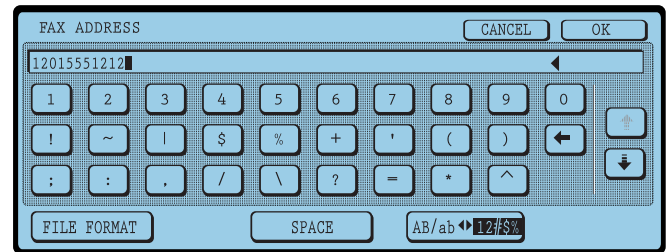
Designed to be both efficient and convenient, the AR-M280U/280N Digital Imager can store up to 500 quick-dial numbers, so high-volume faxing is never an issue. With exceptional clarity, 256 grayscale levels, and variable resolution settings, even documents with extra fine print and graphics are clearly legible. For even greater efficiency, the Duplex Single Pass Feeder, allows you to fax both sides of a two-sided document automatically—reducing time.

For added versatility, documents can also be faxed to any Internet-enabled fax machine. Simply press the ImageSEND key, enter the Network IP address of any fax machine on the QWERTY keyboard, and walk away. The AR-M280U/280N Imager saves time and reduces costs on dialing expenses.

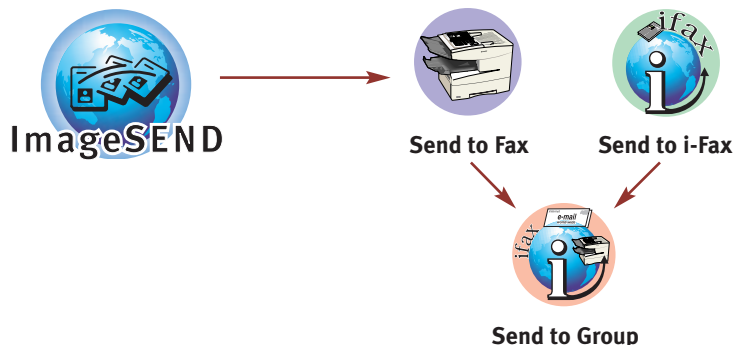
The Sharp AR-M280U/280N Imager also supports the F-code standard, enabling you to perform special operations such as relay broadcast transmission and confidential transmission. F-code is essential in secure environments where confidential transmission and reception is required.



▲ **Duplex Single Pass Document Feeder**
Duplex faxing enables users to automatically fax both sides of a 2-sided document, enhancing productivity.



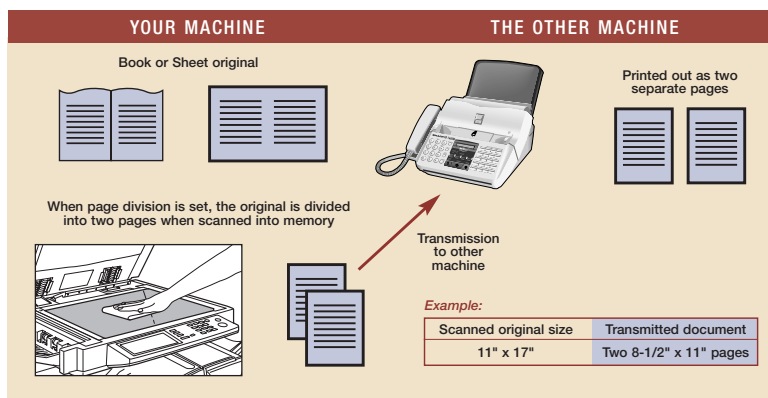
▲ The LCD touch screen display makes it easy to enter in a fax or Internet fax address quickly and easily.



◀ With a touch of the ImageSEND button, users can easily fax right from the control panel. Plus, Send to i-Fax allows users to fax documents worldwide to any T-37 Internet fax machine, reducing phone expenses.

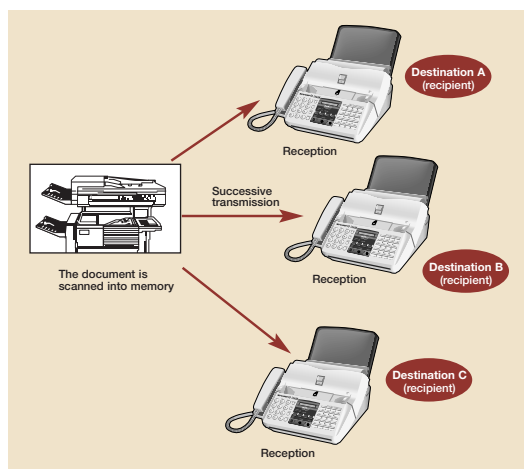
◀ With the addition of the Network Scan Expansion Kit, you can send documents to e-mail, fax, and i-fax destinations simultaneously.

*with ITU-T No.1 chart standard resolution, SUPER G3 mode, 33,600 bps, JBIG compression.



▲ Dual Page Scanning

Easily send multiple page faxes from books with the Dual Page Scanning feature.



◀ Broadcast Polling

For added efficiency, you can automatically fax a document to up to 300 locations at the same time.

at a glance

Highlights:

- ImageSEND allows users to scan and fax a document right from the LCD touch screen
- Transmission times of 2 seconds (Super G3)¹ and 6 seconds (G3)
- 33.6 Kbps modem speed
- 256 grayscale levels
- JBIG Compression
- 500 one-touch and group dial keys
- Serial Broadcast up to 300 locations
- Fax and E-mail mixed broadcasting
- Duplex Faxing



¹With ITU-T No.1 chart standard resolution, SUPER G3 mode, 33,600 bps, JBIG compression.

AR- (M) 280U/280N

General

Type:	Console
Copy system:	Dry, electrostatic transfer system
Paper size:	Max. 11" x 17" / Min. 5.5" x 8.5"
Paper capacity:	500 sheets, expandable up to 3,100 sheets with options
Copy/print speed (max):	28 cpm/ppm (8.5" x 11")
Memory:	64MB, upgradeable to 320MB with options, 5GB HDD
Warm-up time¹:	Less than 80 seconds
First copy time:	5.3 seconds (8.5" x 11", 1st paper tray, fast platen mode)
Power requirements:	Rated local AC voltage \pm 10%, 50/60 Hz
Power consumption:	Max. 1.6 kW
Dimensions (WxDxH)²:	32 17/32" x 26 31/32" x 43 15/16"
Weight²:	215 lbs
Account codes:	100

Printer (standard with AR-M280N)

Resolution:	600 dpi, 1,200 dpi equivalent with smoothing technology
Interface:	IEEE 1284 parallel port
Printer drivers:	Windows [®] 95/98/Me, Windows NT [®] 4.0, Windows [®] 2000, Macintosh System 8.5.1-9x
PDL:	PCL5e, PCL6, Emulated PostScript Level 3 (option)
Available fonts:	45 fonts for HP PCL, 136 fonts for PS (with optional AR-PK1)
Other features:	Paper/output tray selection, duplex print, watermarks, pamphlet style, staple (3 patterns), job retention for confidential/sample print, N-up, B&W reverse, mirror image, form overlay, fit to page, auto configuration, easy print (stores settings), confidential print, sample print. Note: some features are not available according to the printer driver used.

Network Scanner (optional AR-NS2 Network Scanner Expansion Kit and Print Server Card required)

Resolution:	200, 300, 600 dpi
Compatibility:	TWAIN compliant (push out method)
Sharpdesk licenses:	10-user licenses included

Print Server Card (standard on AR-M280N)

Hardware interface:	10Base-T, 100Base-TX
Support platforms:	UNIX, Windows 95/98/Me, Windows NT 4.0, Windows 2000, Novell Netware 3.x/4.x (IntranetWare)/Netware5, Macintosh System 8.5.1-9.x
Network protocols:	IPX/SPX for Novell environments, TCP/IP for Windows and UNIX environments, EtherTalk for Macintosh environments
Printing protocols:	Novell Printserver Application w/ NCS and Bindery, Printer resident LPD (includes reaction to LPQ request), TCP FTP for downloading of print files, EtherTalk printing, IPP, NetBEUI for Windows

Copier

Original size:	Max. 11" x 17"
Continuous copy:	Max. 999 copies
Resolution copy:	600 dpi
Zoom range:	From 25 to 400% with 8 preset ratios (4 reduction + 4 enlargement) From 25 to 200% when equipped with DSPF
Other features:	Auto paper selection, auto magnification selection, paper type selection (by type setting), auto tray switching, E-Sort, rotation copy, reserved copy, pre-heat/auto power shut-off modes, copy auditing (100 accounts), margin shift, edge/centre erase, dual page copy mode, multi-shot copy (N in 1), booklet copy

Fax (optional on both AR-M280U and AR-M280N)

Transmission time³:	2 seconds (Super G3); 6 seconds (G3)
Compression method:	MH, MR, MMR, JBIG
Modem speed:	33.6Kbps/2.4Kbps automatic fallback
Intercommunication:	Super G3, G3
Communication line:	PSTN, PBX
# of support lines:	1
Image quality:	256 grayscale levels
Exposure adjustment:	Dark/Auto/Light
Resolution settings:	Normal/Small Letter/Fine/Extra Fine
One touch dial keys:	500 (e-mail addresses included)

Design and specifications are subject to change without notice.

Sharp is a registered trademark of Sharp Corporation.
All other trademarks are property of their respective holders.
¹At rated voltage, 20°C (68°F), 65% RH.

²Dimensions and weight include scanner rack and stand.

³With ITU-T No.1 chart standard resolution, SUPER G3 mode, 33,600 bps, JBIG compression.

SHARP
be sharp™

SHARP ELECTRONICS CORPORATION
Network Office Systems Group • Sharp Plaza, Mahwah, NJ 07430-1163
1-800-BE-SHARP • www.sharppusa.com



As an ENERGY STAR® Partner, SHARP has determined that this product meets the ENERGY STAR® guidelines for energy efficiency.